

FAST MOVING TECHNOLOGY

STÄUBLI

Technology Days

Robotic solutions for every industry - August 27-29, 2019 - 9am to 2pm



TECHNOLOGY DAYS

Agenda and Features

From **August 27-29, 2019**, Stäubli Detroit will again be opening its doors to welcome our customers, following the great success of the last Automotive Customer Days. We will present our latest robotic innovations in a technical and friendly environment. To do so, every morning we will have live demos and partners specialized in PLC, grippers, Vision and system integration available to answer your questions. Our application engineers will be also available to exchange more in details about Stäubli controls and programming options. Feel free to stop by when available and please register online to confirm your participation.



Every day: Welcome Coffee at 9am
Lunch buffet from 12pm-2pm

All Day - See and Feel Zone

- TX2 40, Man robot collaboration level 2 and 3 for assembly process
- TX2touch – Man robot collaboration level 4 with Asyrl flex feeding solution
- TS2 60 – New Scara, new performances and tracking
- TX2 60 – Coordinate Measuring Robot with Metrologic
- TX2 90L – Bin picking solution with Visio Nerf
- RX160 – Robot master programming and machining process
- Education cell – Stäubli Robotic Suite offline programming with real time functionalities
- TX2 90 HE – Water jet cutting and stripping solution
- Robotic maintenance best practices
- Robotic Tool Changer and quick connectors



Presentations

- 10 AM Human Robot Collaboration & Risk Assessment
- 11 AM Stäubli AGVs and Helmo mobile robotic solutions



TECHNOLOGY DAYS

Access Map and Registration

Stäubli has added a third United States location in Detroit, Michigan supporting Connectors, Robotics and Textile customers. The Detroit location is designed fundamentally for customer technical service and training. Located in the heart of the automotive manufacturers and tier one suppliers, Stäubli provides hands on service nearby.

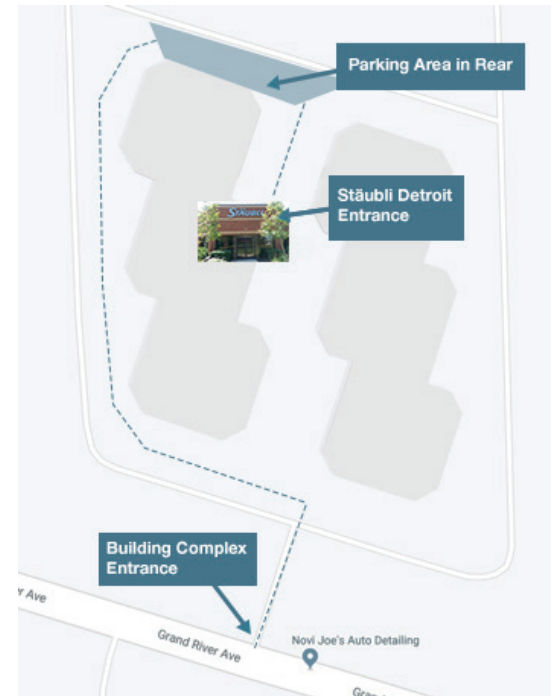


Directions - Access Map

**Stäubli Detroit - 39830 Grand River Ave
Suite B-3, Novi, MI 48375**

From Detroit Airport:

- Depart M-53 / Van Dyke St toward Lyford St
- Turn right onto Edsel Ford Fwy E
- Take ramp left and follow signs for I-94 West
- At exit 215B, take ramp right for M-10 North toward Southfield
- At exit 18C, take ramp left for I-696 West toward Lansing
- At exit 1, take ramp right for M-5 East toward GD River Ave
- Take ramp right for Grand River Ave toward 10 Mile Rd
- Turn right onto Grand River Ave
- Turn right to stay on Grand River Ave
- Arrive at Grand River Ave



Registration

We look forward to seeing you at Technology Days! If you would like to attend please register using the link below, or scan the QR Code to register in only a few clicks. You will receive a confirmation email right away.

<https://solutions.Stäubli.com/NoviTechDays819>



Scan here to register!

TS2 SCARA Range

Design, performance and connectivity redefined

Stäubli is entering a new performance class with its TS2 SCARA series. The completely redesigned 4-axis machine with proprietary JCS drive technology facilitates ultra-short cycle times and high repeatability. It also has a revolutionary hygienic enclosed structure design which opens up new possibilities for use in harsh and sensitive environments. It is piloted by the generic CS9 controller that also controls TX2 6-axis robots.

Outstanding speed and dynamics

- Patented JCS gearbox on axis 1 and 2



Best in class repeatability

- Unique, 19-bit safe digital absolute multi-turn encoders ready to operate with no initiation



Flexible integration in the production line

- Floor and ceiling versions available



Unique cylindrical envelope and small footprint

- Axis 1 working range: $\pm 180^\circ$
- High dexterity in small work-spaces due to compact integration of motors

Smart connected tool

- Pneumatic and electrical circuit including Cat5e available at the tool
- Integrated tool changer available (optional) Allows automatic - manual connection / disconnection of various tools



Complete encapsulated design

- First full encapsulated design, IP65 with belows
- Different integrated tubings and valves available
- Clean and hygienic:
 - no screws from the top in whole working envelope
 - hexagonal screw head
 - vertical cabling possible



TX2 Collaborative Range

Design, performance and connectivity redefined



- Fully encapsulated 6-axis arm enabled by hollow shaft drives, no external cables
- Compatible with all sensitive environments, from harsh to ESD and cleanrooms
- IP65/67 for the entire arm with pressurization kit
- Easy service access to components
- 360° mounting possibility for flexible and scalable integration
- Patented Stäubli JCS/JCM (motor-/gearbox module) for Stiffness, linearity, smoothness, and no backlash
- Large and efficient spherical working range
- Safe digital absolute multiturn encoders (no battery in the arm)
- Righty-lefty integration possible for maximum work envelope usage
- Optimized arm segment stiffness
- Integrated electrical and pneumatic user circuit including Cat5e
- Sealed vertical cable option bringing additional and smart integration options
- Unique and modular SIL3-PLe safety functionalities.



SAFE TOUCH with TX2touch version



SAFE LIMITED SPEED



SAFE ZONE



SAFE STOP

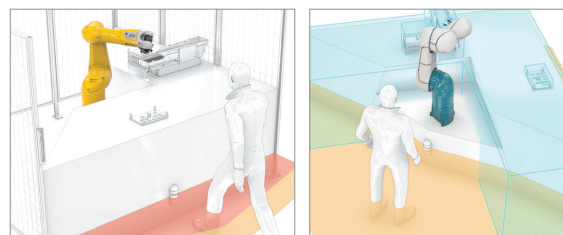


SAFE TOOL

Productivity and collaboration experts

Stäubli TX2 robots work both for, and with, people. They are the fastest and safest industrial robots to bring you a more secured payback. The TX2 arm and its CS9 controller make high productivity and collaboration possible thanks to a unique set of modular SIL3-PLe safety functionalities.

The TX2touch is a unique range of cobots designed for safe Man Robot Collaboration while maintaining high productivity. Based on the proven TX2 industrial robot, it offers safe operation thanks to its advanced skin technology, quick reaction time and embedded modular safety functions. TX2touch is the only cobot with the SIL3/PLe safety level.



Controllers and Software

CS9 Controller

This new lightweight and compact controller offers a variety of integrated functions providing faster integration and consistent availability with minimal maintenance. This innovative CS9 sets new standards in safety which protects production, equipment and people.

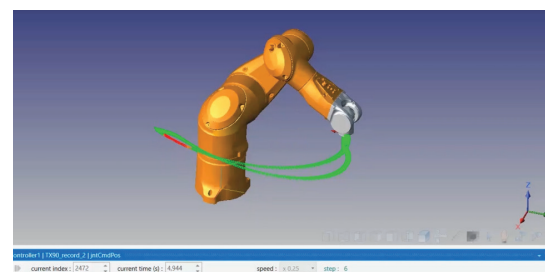
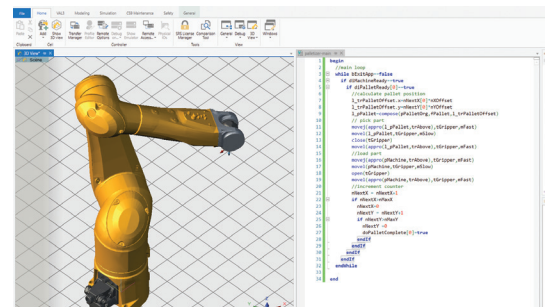
- Supports all communication protocols
- Controller based on high power CPU with real-time and industrial OS
- Multi-tasking with unlimited synchronized tasks
- Ethernet based real time bus system as a standard
- EtherCAT master as a standard
- One standard controller for both 6 axis and scara robots
- Optimized energy consumption
- Easy and fast maintenance
- Web server integrated for customized HMI interface



Staubli Robotics Suite 2019

Staubli Robotics Suite offers all the necessary tools to perform realistic simulations and offline programming of robotic cells.

- All robot models are available in multiple configurations
- Offline application editing and testing
- All the functionalities are presented as large icons
- Fully customizable layout to easily display all the necessary elements and simplify the creation of the robot cell
- Deep integration of the VAL 3 editor with the 3D scene
- Simultaneous operation of several robots
- Compatible with the new TX2-TS2-CS9 range of robots



TECHNOLOGY DAYS

Technical Partners

To give you a full overview of the new technical trends of the automation industry, Stäubli invited technical partners that will be displaying products and answering your questions:

Schunk

SCHUNK is a competence leader for gripping systems and clamping technology. With more than 11,000 standard components, SCHUNK offers the world's largest assortment of gripping systems and clamping technology from one source.



Visio Nerf

This company has built its offer around easy to use and highly effective 3D smart cameras for the localization of parts (Bin-Picking) and quality control in production-specific contexts.



Asyri

Asyri's award-winning series of Asycube flexible feeders offers high performance part feeding, pre-orientation with an optimal and fast surface distribution of bulks parts. They are compatible with almost all part geometries for part size ranging from 0.1mm to 150mm.



Metrologic

Metrologic Group is a global 3D metrology software frontrunner, specialized in the design and development of industry-leading, high-tech, 3D measurement software solutions, associated electronics and integration services.



Koops

Provides custom automation solutions integrating a wide range of assembly, inspection, processing, and robotic technologies. Koops starts with your concept or part and works with you to design, build, program, launch, and service automation equipment. Whether you are looking for turn-key or build-to-print equipment, Koops can integrate Stäubli technology into your processes.



Rockwell Automation

Rockwell Automation is dedicated to bringing The Connected Enterprise to Life through industrial automation and information. They integrate control and information across the enterprise to help industrial companies and their people be more productive. Their products optimize industrial operations through control systems, information software, motor control devices, sensing devices, and network technology which help customers turn data into actionable insights.





■ Stäubli Units ○ Agents

Global presence of the Stäubli Group

www.staubli.com

About us

Accelerating productivity through innovative mechatronics solutions

Stäubli is a mechatronics solutions provider with three dedicated activities: Connectors, Robotics and Textile. With a global workforce of over 5,500, the company generates annual turnover surpassing 1.3 billion Swiss francs. Originally founded in 1892 as a small workshop in Horgen/Zürich, today Stäubli is an international group headquartered in Pfäffikon, Switzerland. Worldwide, Stäubli operates fourteen industrial production sites and 29 business units, with a network of agents in 50 countries, delivering innovative solutions to all industries.

History and future

Founded in 1892 as a family-owned workshop on the bank of Lake Zürich, Stäubli is a pioneer in mechatronics, rooted in a proud heritage of quality craftsmanship. We are also a forward-thinking organization, on a continual quest for the next great innovation that will help our customers work more productively, efficiently, and sustainably.

www.staubli.com

For further information:
www.staubli.com/contacts